

Quito Village

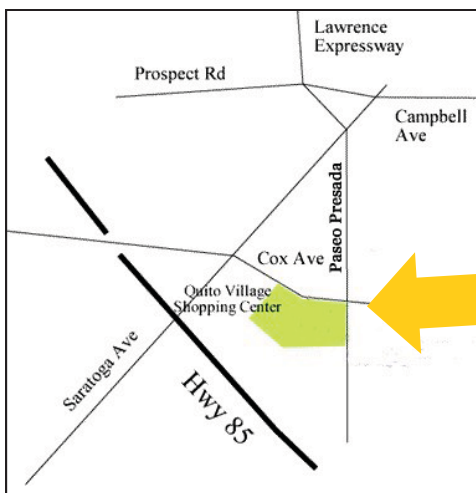
18770 – 18860 Cox Avenue, Saratoga, 95070



COMMERCIAL RETAIL SPACE FOR LEASE

Quito Village is located in the heart of Saratoga, at busy intersection of Saratoga & Cox Ave, with easy access to **HWY 85**

- Upscale restaurant welcome
- Minutes away from **Los Gatos, Campbell**
- In West Valley, one of Silicon Valley's most elite, affluent communities, strong demographics with **high disposable incomes**
- Anchored by **Gene's Fine Foods**, a neighborhood favorite upscale grocer
- Courtyard will be **remodeled** in an attractive manner
- Next to **Saratoga Business Center**



1455 McCarthy Blvd
Milpitas, CA 95035
Tel: 408.955.9900
Fax: 408.383.9887
www.GDCommercial.com
CA DRE License No.: 01522633



JOHN & JACKIE LUK: **408-930-3699**
JOYCE SUN: **510-552-7711**
SIMONE WANG: **510-938-1888**
CHRIS HUANG: **650-492-0120**
CYNTHIA LAI: **408-480-8811**
JANICE XIE: **408-813-9083**

Quito Village

18770 – 18860 Cox Avenue, Saratoga, 95070



Saratoga高尚的社區，優質的生活已經吸引越來越多的亞裔居民來此安家。然而市里較少商業開發，往往要去臨近城市方能享受正宗亞洲美食或服務

機會難逢!!!

Quito Village大型商場改建招商
誠招名師餐館，特色商鋪加盟

Quito Village位于Saratoga市區中心，繁忙的Saratoga大街與Cox交匯處，高速85號即可到達。交通便利，人流絡繹。

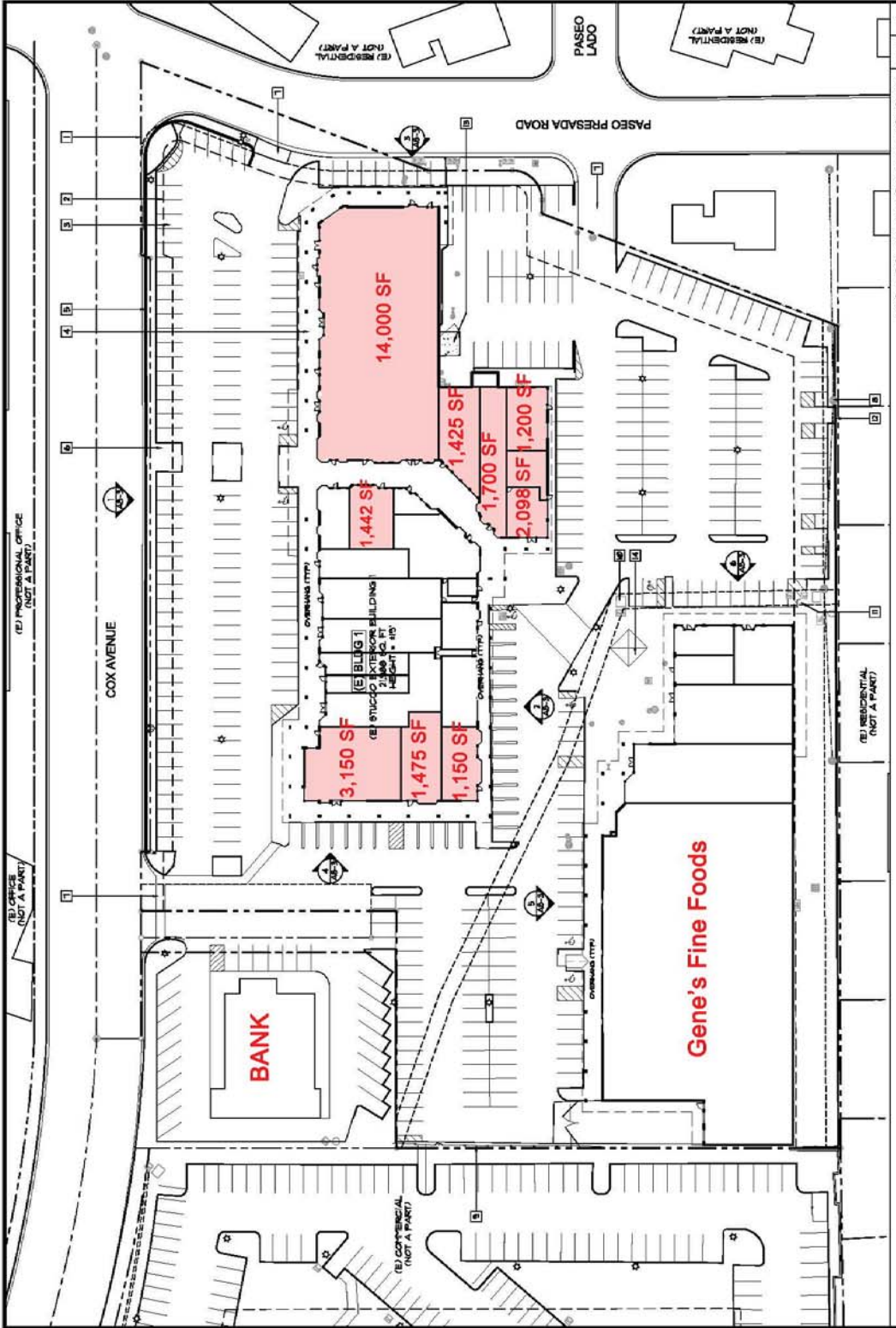
- ⇒ Los Gatos, Campbell居民也可方便到達
- ⇒ 位于矽谷高檔社區，居民平均收入高，購買力強
- ⇒ 由區內最受歡迎超市 Gene's Fine Foods領軍，保證眾多客流
- ⇒ 靠近商務區與學校，充沛的日間人流



1455 McCarthy Blvd
Milpitas, CA 95035
Tel: 408.955.9900
Fax: 408.383.9887
www.GDCommercial.com
CA DRE License No.: 01522633

JOHN & JACKIE LUK: 408-930-3699
JOYCE SUN: 510-552-7711
SIMONE WANG: 510-938-1888
CHRIS HUANG: 650-492-0120
CYNTHIA LAI: 408-480-8811
JANICE XIE: 408-813-9083

EXISTING SITE PLAN



QUITO RETAIL CENTER REMODEL

18770-18880
COX AVENUE
SARATOGA, CALIFORNIA

SANDHILL PROPERTIES



AVAILABLE



REDUCED 11 X 17 PRINT
ORIGINAL 24 X 36

DATE: 03-2009
PLANNING DEPARTMENT: 03-2009
PLANNING RESIDENTIAL: 03-2009

PROJECT NO.: 03-1106
DATE: 03/11/2009
DRAWN BY: [Name]
SCALE: AS SHOWN

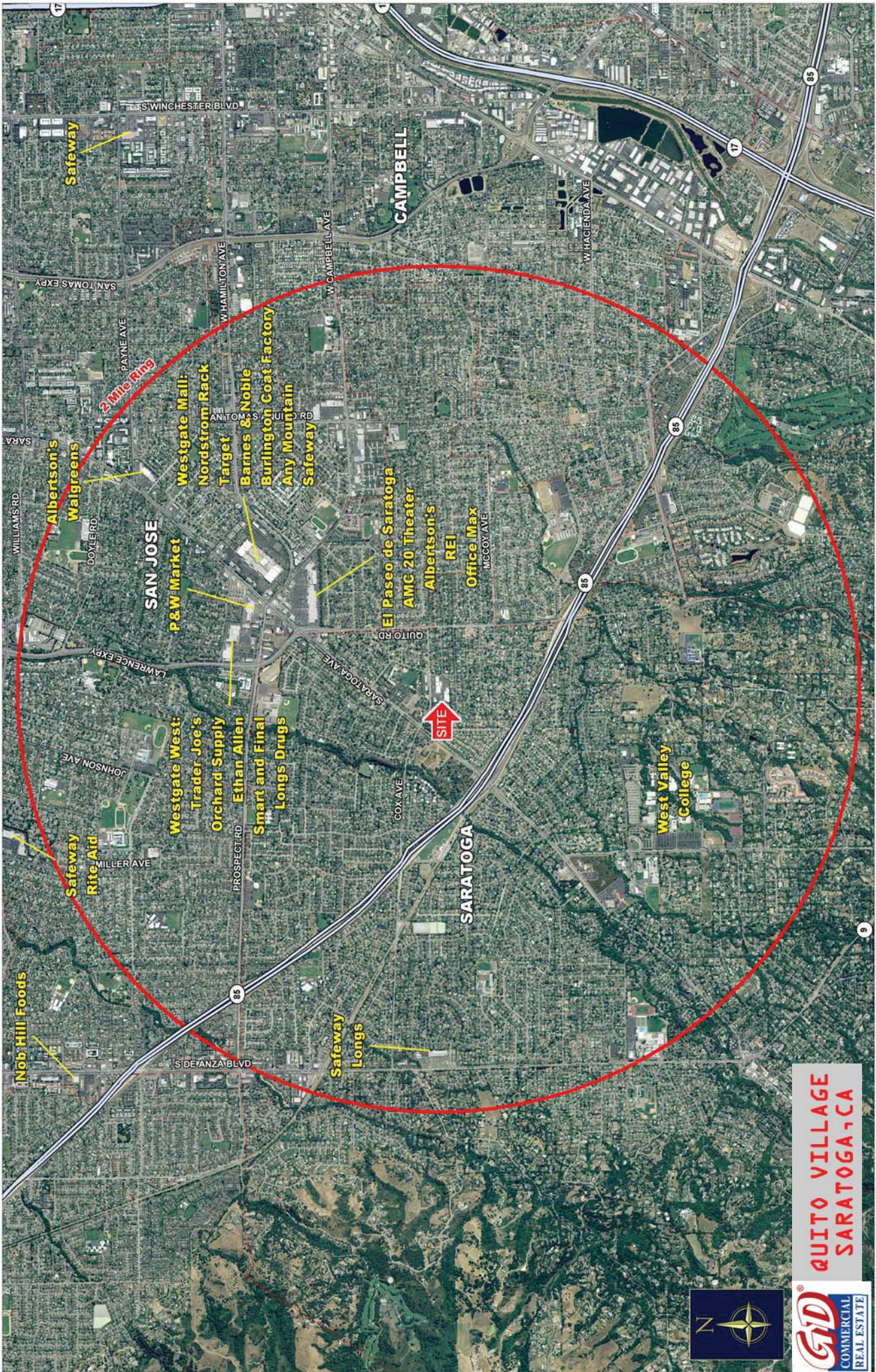


EXISTING
SITE PLAN
AS-1.1

© 2009 SANDHILL INC.

EXISTING SITE PLAN - FOR REFERENCE ONLY	
(E) ELECTRICAL + TELECOM. EASMENT	(E) LANDSCAPE AREA TO REMAIN
(E) IT CONCRETE SOUND WALL	(E) TWO-WAY DRIVEWAY TO REMAIN
(E) TRASH ENCLOSURE TO REMAIN	(E) UTILITY POLES
(E) PLAZA WITH (E) GRASS	(E) 4" CHAIN-LINK FENCE
(E) TRANSFORMER PAD	(E) CONCRETE RETAINING WALL
(E) RETAIL AREA (GROSS) + 273,840 SF (4 @ 28 AC)	(E) PROPERTY LINE, TYP.
(E) BUILDING AREA	(E) RETRACT LINE
(E) RETAIL BLDG. 1	(E) PARKING TO REMAIN, TYP.
(E) RETAIL BLDG. 2	(E) CONCRETE WALK
(E) RETAIL BLDG. 3	(E) CONCRETE RETAINING WALL
RETAIL	
CA-COMMERCIAL	
NEIGHBORHOOD	
3871 B/YALLS	
48,004 SF	
67,968 SF	
62,838 SF	
106,045 SF	
TABULATIONS	
EXISTING USE	
ZONING DESIGNATION	
(E) PARCENS	

KEY NOTES



Safeway

Albertson's
Walgreens

Westgate Mall:
Nordstrom Rack
Target
Barnes & Noble
Burlington Coat Factory
Any Mountain
Safeway

P&W Market

El Paseo de Saratoga
AMC 20 Theater
Albertson's
REI
Office Max

SITE

West Valley
College

Safeway
Rite Aid

Westgate West:
Trader Joe's
Orchard Supply
Ethan Allen
Smart and Final
Longs Drugs

Nob Hill Foods

Safeway
Longs

QUITO VILLAGE
SARATOGA, CA



Saratoga Ave Saratoga, CA 95070

17 January 2009 2

	1 MILE RING 3.14 SQ/MI	3 MILE RING 28.27 SQ/MI	5 MILE RING 78.53 SQ/MI
POPULATION			
2000 Total Population	19,986	180,288	431,167
2008 Total Population	20,379	182,786	442,187
2013 Total Population	20,791	186,247	451,933
% Population Change 2000-2008	1.97%	1.39%	2.56%
% Population Change 2008-2013	2.02%	1.89%	2.20%
HOUSEHOLDS			
2000 Total Households	7,309	67,117	165,791
2008 Total Households	7,674	70,185	174,606
2013 Total Households	7,889	71,989	179,520
% Households Change 2000-2008	4.99%	4.57%	5.32%
% Households Change 2008-2013	2.80%	2.57%	2.81%
2008 RACE			
2008 White Population	11,302	86,464	224,784
2008 Hispanic Population	976	12,398	34,389
2008 Black Population	368	3,615	9,056
2008 American Indian/Alaska Native	55	516	1,414
2008 Asian/Hawaiian/Pacific Islander	6,431	66,217	135,295
2008 Other Population (Incl 2+ Races)	1,246	13,576	37,248
2008 INCOME			
2008 Per Capita Income	\$46,935	\$47,439	\$48,285
2008 Median Household Income	\$95,428	\$88,922	\$87,224
2008 Average Household Income	\$124,639	\$123,547	\$122,280
2008 Average Household Size	2.6	2.6	2.5
2008 Total Occupied Housing Units	7,668	70,176	174,611
2008 Total Owner Occupied Housing Units	5,399	41,130	99,169
2008 Total Renter Occupied Housing Units	2,269	29,046	75,442
2008 Total Establishments	1,255	10,034	25,545
2008 Total Daytime Population	20,823	180,494	444,869
2008 Total Daytime Work Population	10,233	88,076	228,447