

Evergreen Marketplace

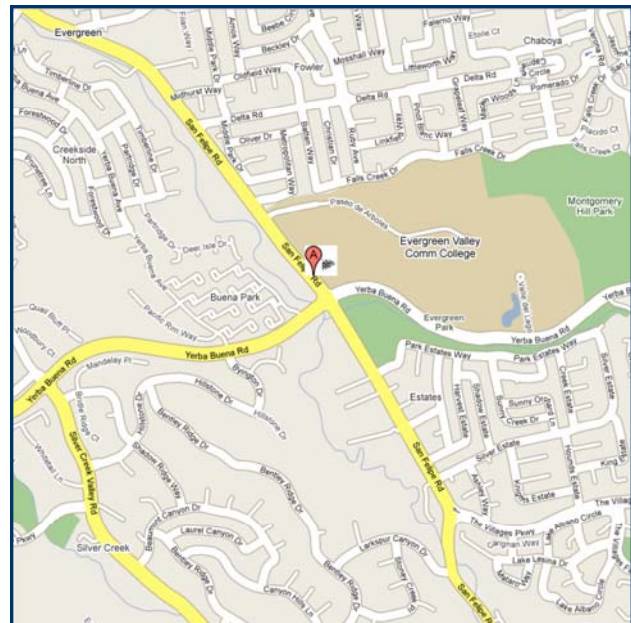
4838-4848 San Felipe Road, San Jose, CA 95135
RETAIL SPACES FOR LEASE



Property Profile

- Rent from \$3.00 NNN \$.89
- Spaces from 1,089 — 4,587 SF
- Flexible Terms
- Food uses welcome

Description: Newer retail center located in the heart of Evergreen/Silver Creek, access via both Yerba Buena & San Felipe through large shared parking.



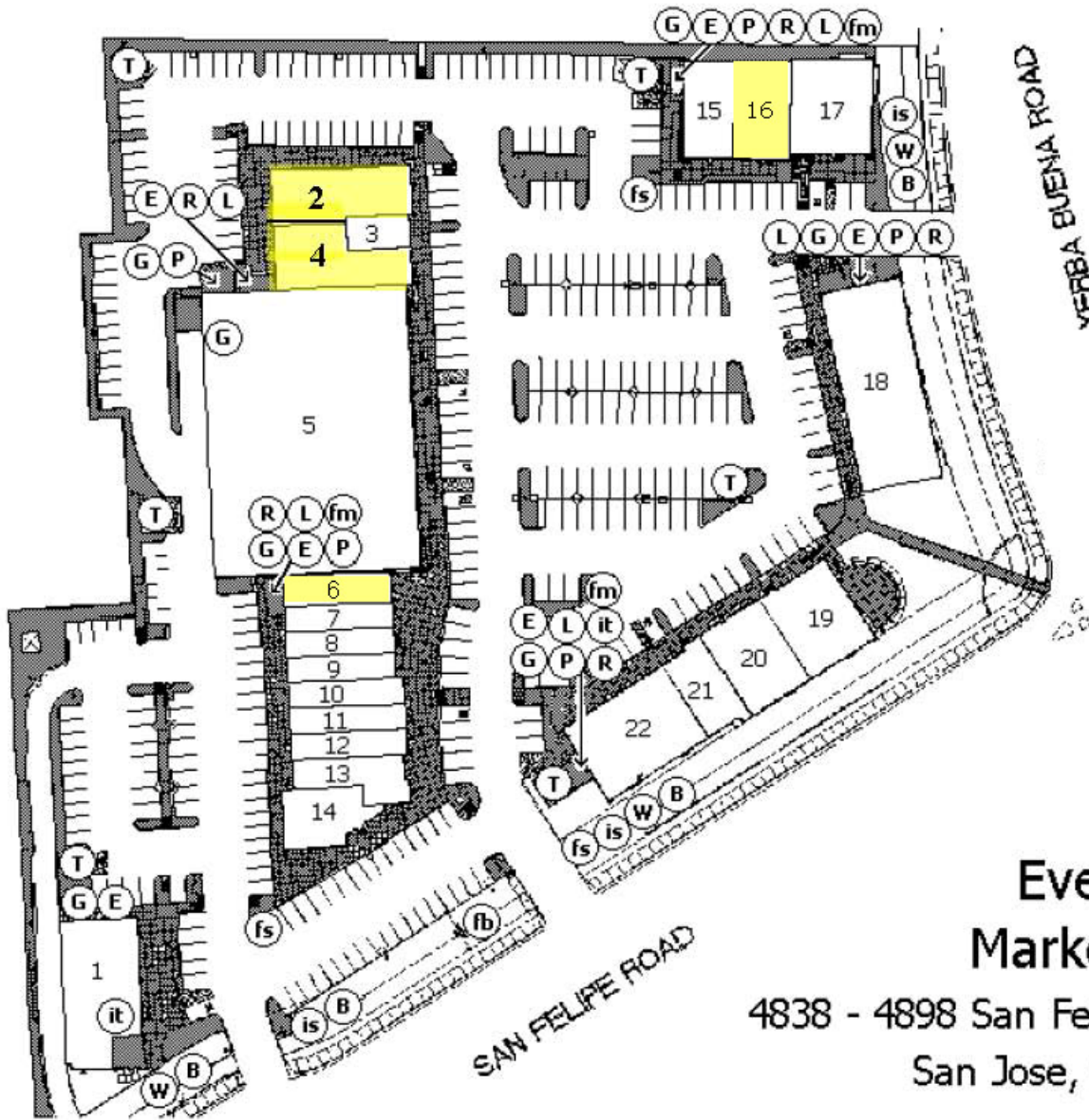
GD Commercial, Inc.
1455 McCarthy Blvd.
Milpitas, CA 95035
Tel: 408.955.9900
Fax: 408.383.9887
www.GDCommercial.com

For more information, please contact:

Steven Tran
StevenT@GDCommercial.com
(408) 315.3506

Hai Dang
HaiD@GDCommercial.com
(650) 492.0120

John Luk
JohnL@GDCommercial.com
(408) 955.9900



Evergreen Marketplace

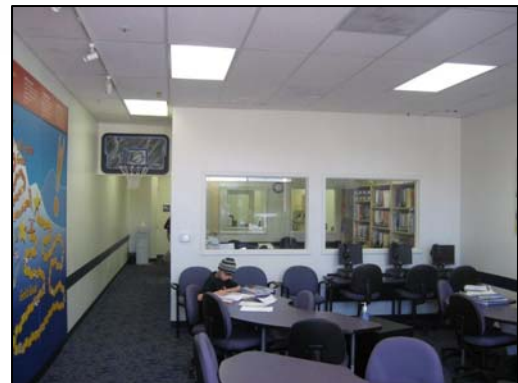
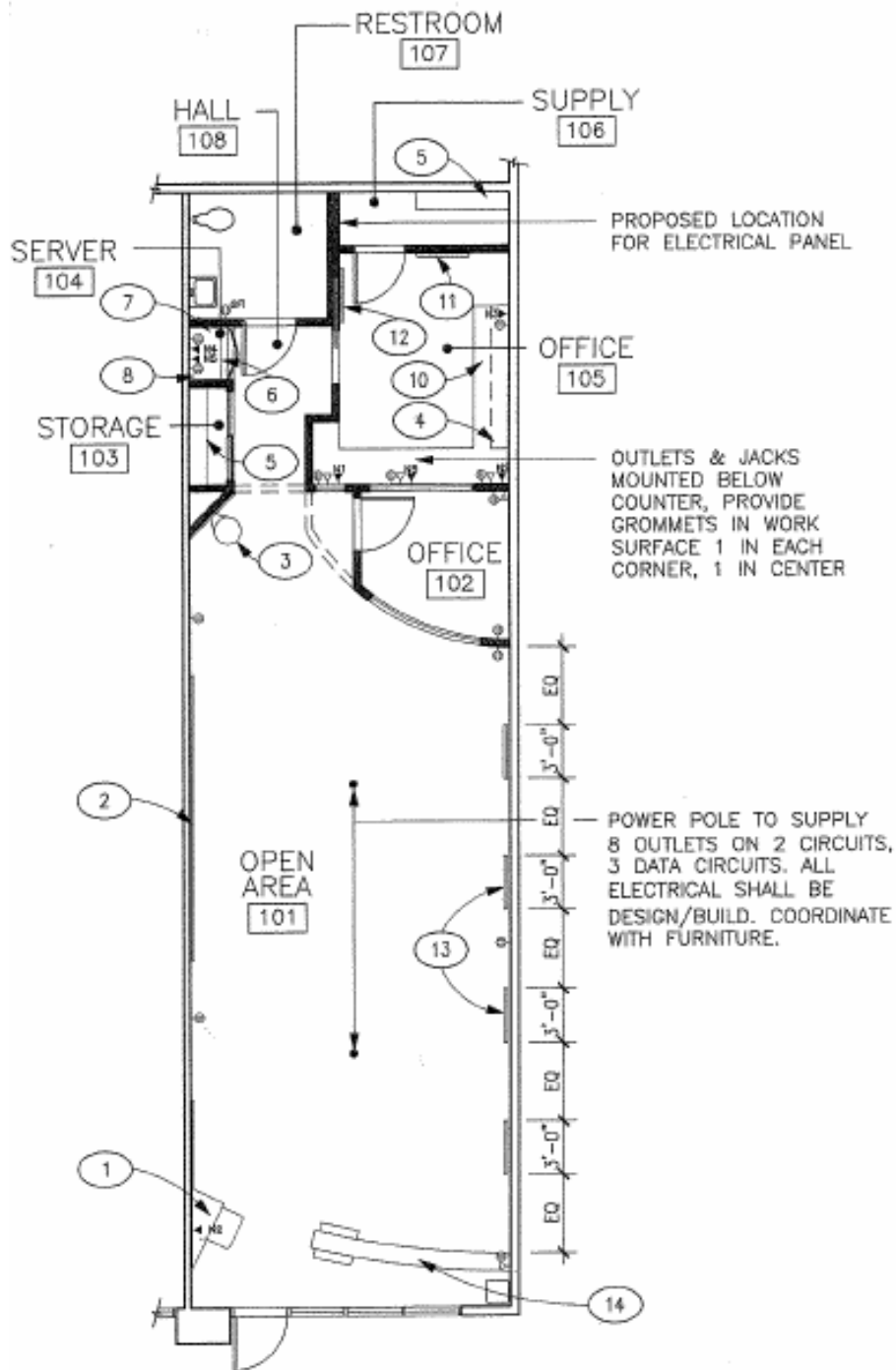
4838 - 4898 San Felipe Road
San Jose, CA 95135

- | | |
|--------------------------------------------|-------------------------------------------|
| 1. 4,000 sf - McDonald's - 4838 | 12. 1,029 sf - Casa Castillo - 4848 #130 |
| 2. 2,087 sf - VACANT - 4868 #130 | 13. 1,515 sf - Jamba Juice - 4848 #120 |
| 3. 1,088 sf - Ev. Dental - 4868 #120 | 14. 1,656 sf - Starbuck's - 4848 #110 |
| 4. 2,500 sf - VACANT - 4868 #110 | 15. 1,623 sf - Curves - 4878 #110 |
| 5. 20,000 sf - Long's Drugs - 4858 | 16. 2,130 sf - VACANT - 4878 #120 |
| 6. 1,200 sf - VACANT - 4848 #190 | 17. 2,694 sf - Radio Shack - 4878 #130 |
| 7. 960 sf - Ev. Dry Cleaners - 4848 #180 | 18. 5,730 sf - Well's Fargo - 4888 |
| 8. 950 sf - Yogurt Shop - 4848 #170 | 19. 2,555 sf - Pasta Pomodoro - 4898 #150 |
| 9. 950 sf - Professional Nail - 4848 #160 | 20. 2,200 sf - Panda Express - 4898 #140 |
| 10. 1,029 sf - AIM Mail Center - 4848 #150 | 21. 1,545 sf - Pizza My Heart - 4898 #120 |
| 11. 1,029 sf - Dr. Khuu, Optom - 4848 #140 | 22. 3,500 sf - Le Boulanger - 4898 #110 |

# 2	2,087 SF	\$ 3.25 / SF NNN	Furnished, former Alliance Title space
# 4	2,500 SF	\$3.00 / SF NNN	Divisible from 2,067 SF
# 6	1,200 SF	\$3.25 / SF NNN	Former Score, tutoring services space. Built out with two offices and restroom in the rear
# 16	2,130 SF	\$3.25 / SF NNN	Fully furnished, full service salon that is turnkey ready.

FLOOR PLAN

1,200 SF, Suite 190



FLOOR PLAN

2,130 SF, Suite 120

